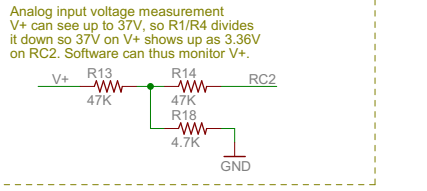
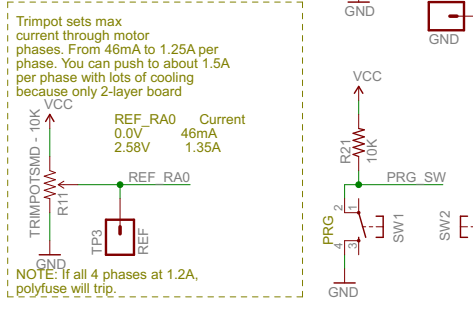
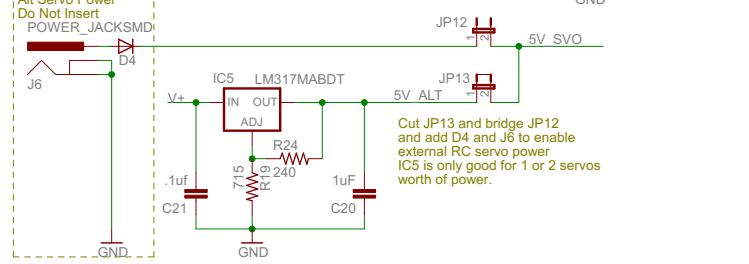
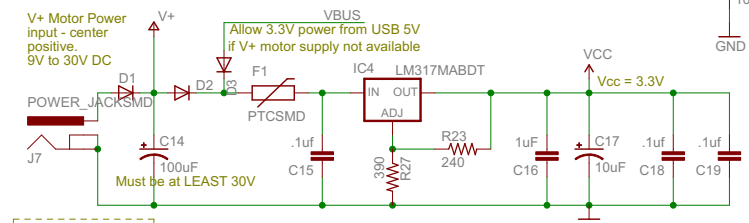
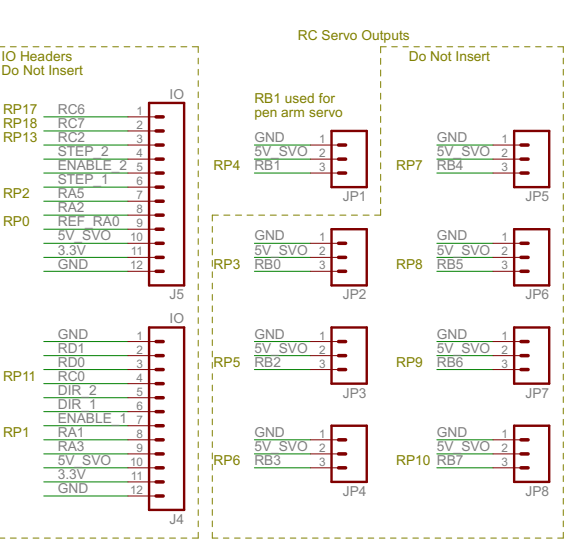
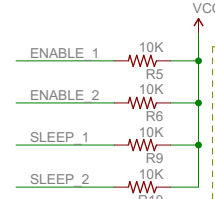
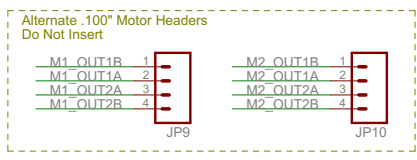
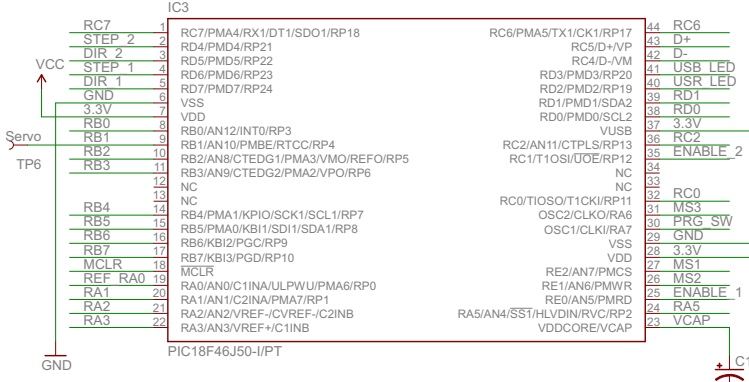
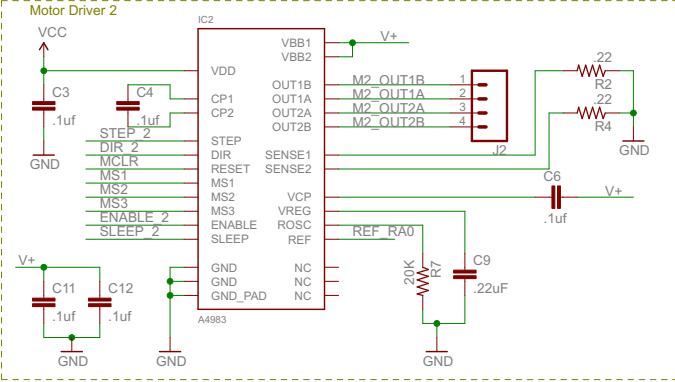
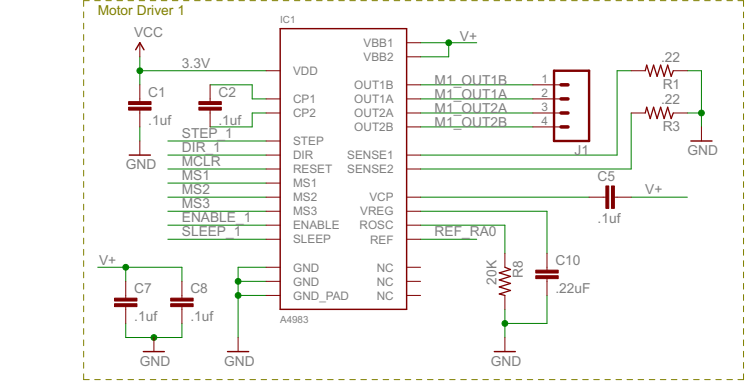


EiBotBoard (EBB)

licenced under Creative Commons v3.0 Attribution licence
Version 08/03/2010
by Brian Schmalz of Schmalz Haus

www.schmalzhaus.com/EBB

Change List
v1.2 05/07/2009
Switched to A4988 drivers
Added four RC servo connectors
Ganged some logic I/O between drivers
Switched pot and power pins to SMT
All extra I/O now on left side
v1.3 01/06/2010
All STEP/DIR now on PortD
S2 moved from right power connector
Added FPC and logic status LEDs
Auto power from USB and power jack
Removed fixed resistor in VREG circuit
Fixed bug with RA1T
Added pull ups on enable for bootloading
CPU can monitor input voltage now
v1.4 04/06/2010
Removed schematic circuit
Revised motor connectors together
Revised servo connectors to top edge
Added step/directional pins to connectors
Added 100 optional motor headers
v1.5 04/12/2010
Added RC servo power input
Added 5V regulator for RC servo power
06/02/2010
Revised servo connectors together
Changed pin C14 to higher voltage (larger footprint)
Added 100 optional motor headers
Moved some silk screen to avoid vias and connectors
08/02/2010
SF: Added test point, some headers now locking



SFE SCHMALZHAUS	Title: EiBotBoard-v13	
	Version:	10/18/2010 12:15:37 PM
Drawn By:		1/1